



Company : Santos

Well : Henry 2DW1 ST1

Interval : 799.00 - 1759.72 meters

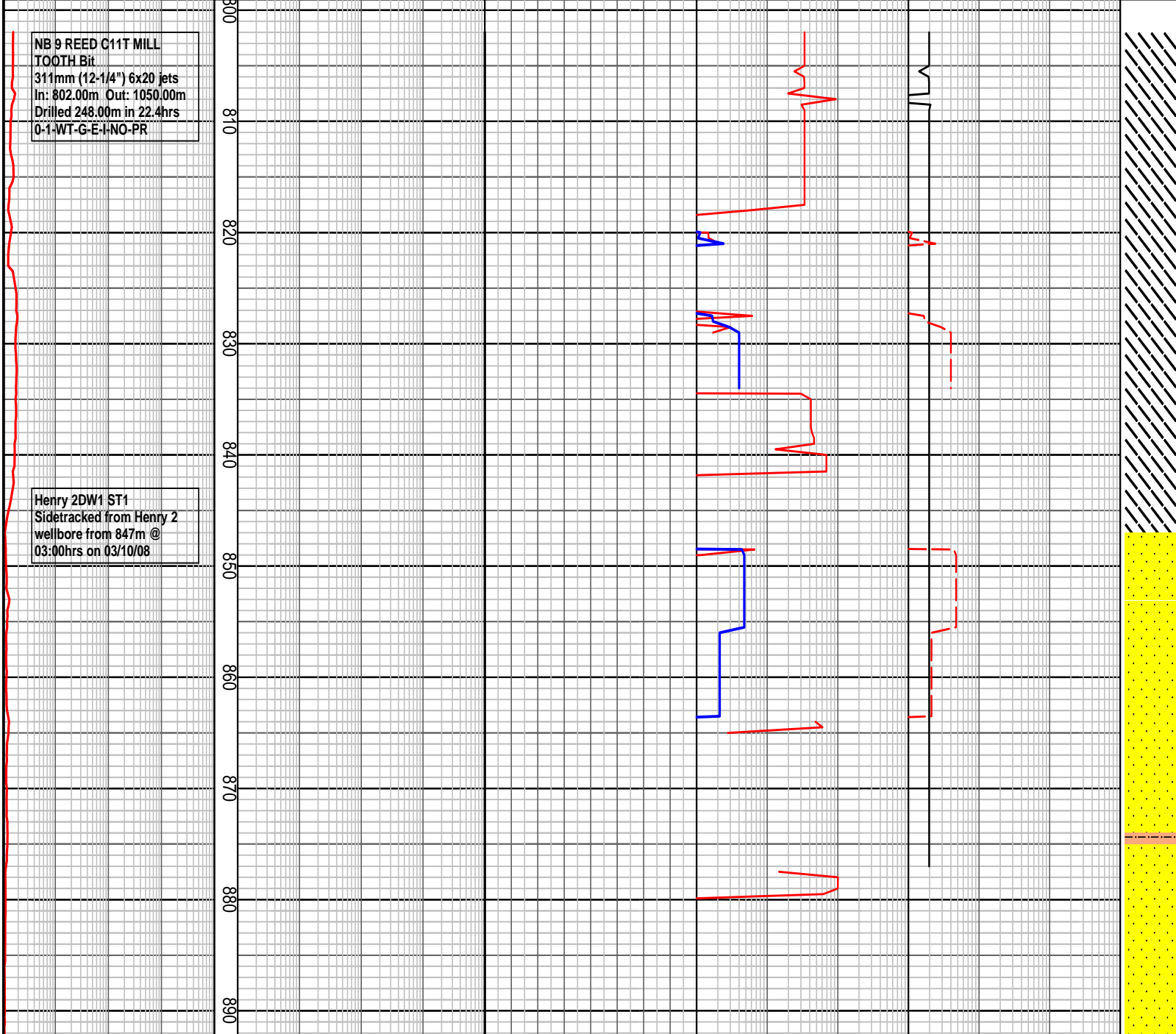
Created : 07/Oct/2008 6:22:17 AM

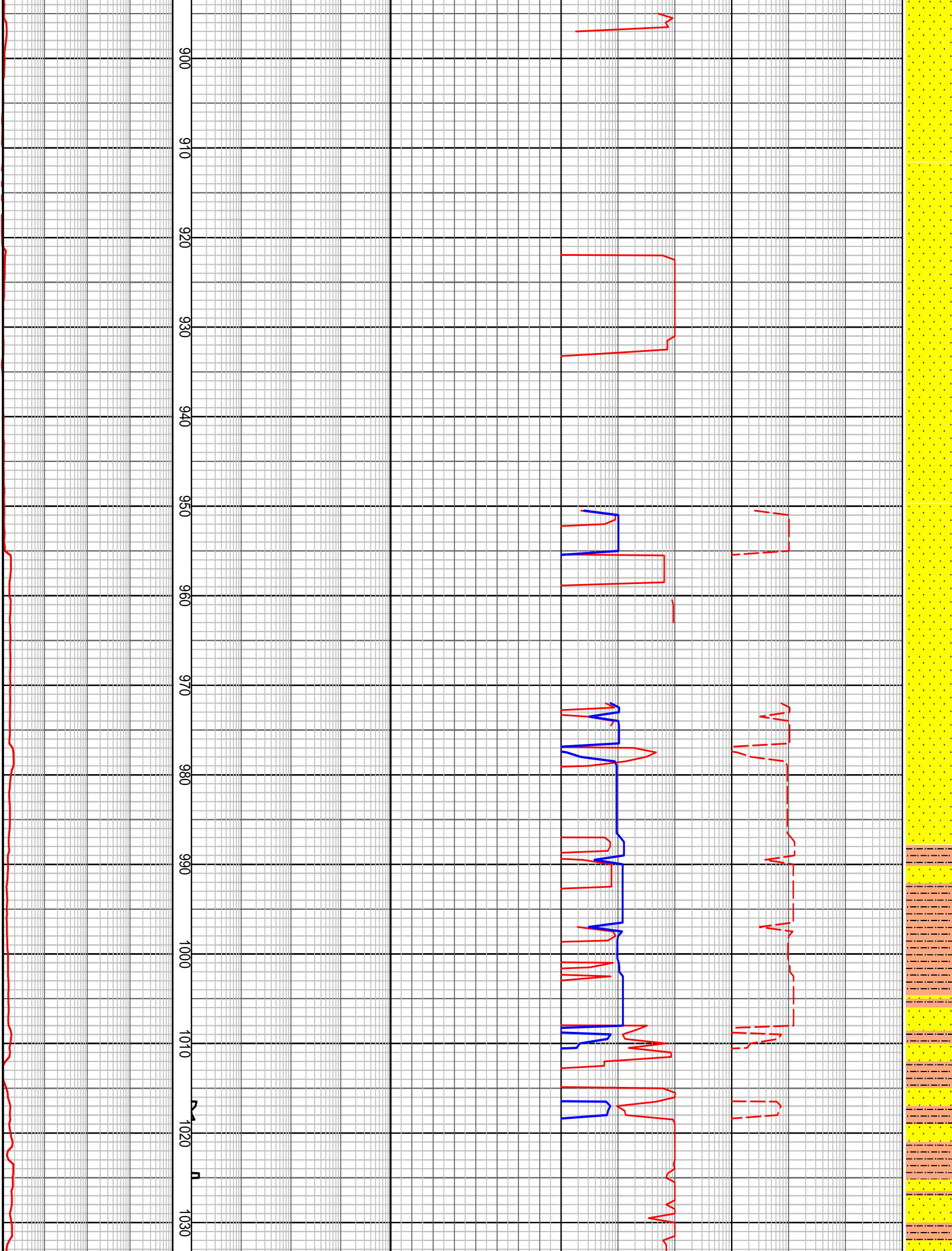


INTEQ

HENRY 2DW1 ST1 GAS RATIO PLOT

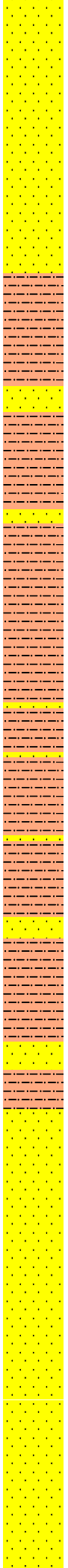
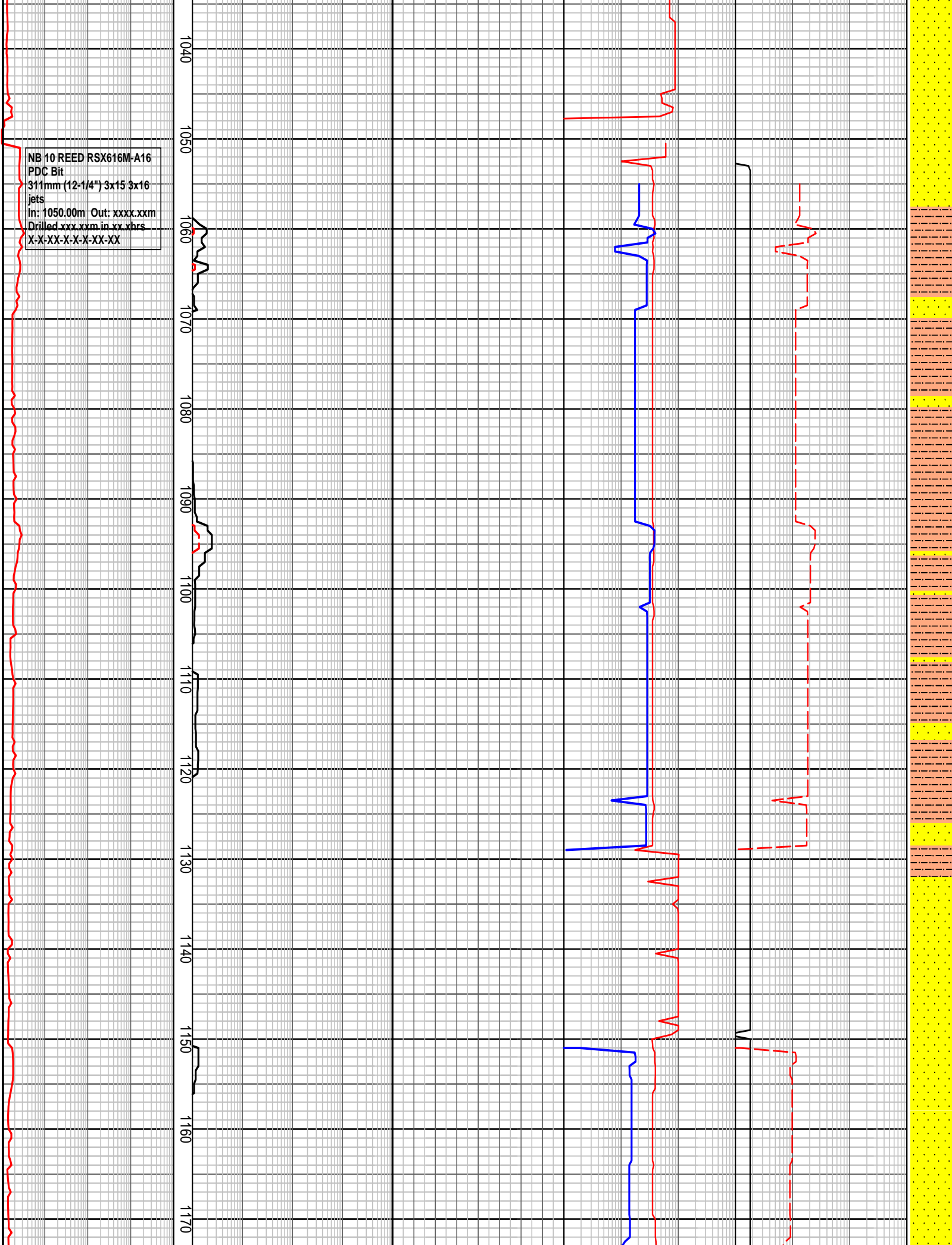
TOTAL GAS DITCH GAS	MD meters :500	CHROMATOGRAPH ANALYSIS		OCQ		RATIOS		C1/(C2+C3+C4)	
		Methane		OCQ Backup		GWR		C1/C2	
1 10 100 1000 unit		Ethane		5 6 7 8		10 100 1000		C1/C3	
		Propane		OCQ		LHR		C1/C4	
		iso-Butane		1 2 3 4		10 100 1000		C1/C5	
		iso-Pentane						10 100 1000	
		n-Butane							
		10 n-Pentane 100000							
		ppm							

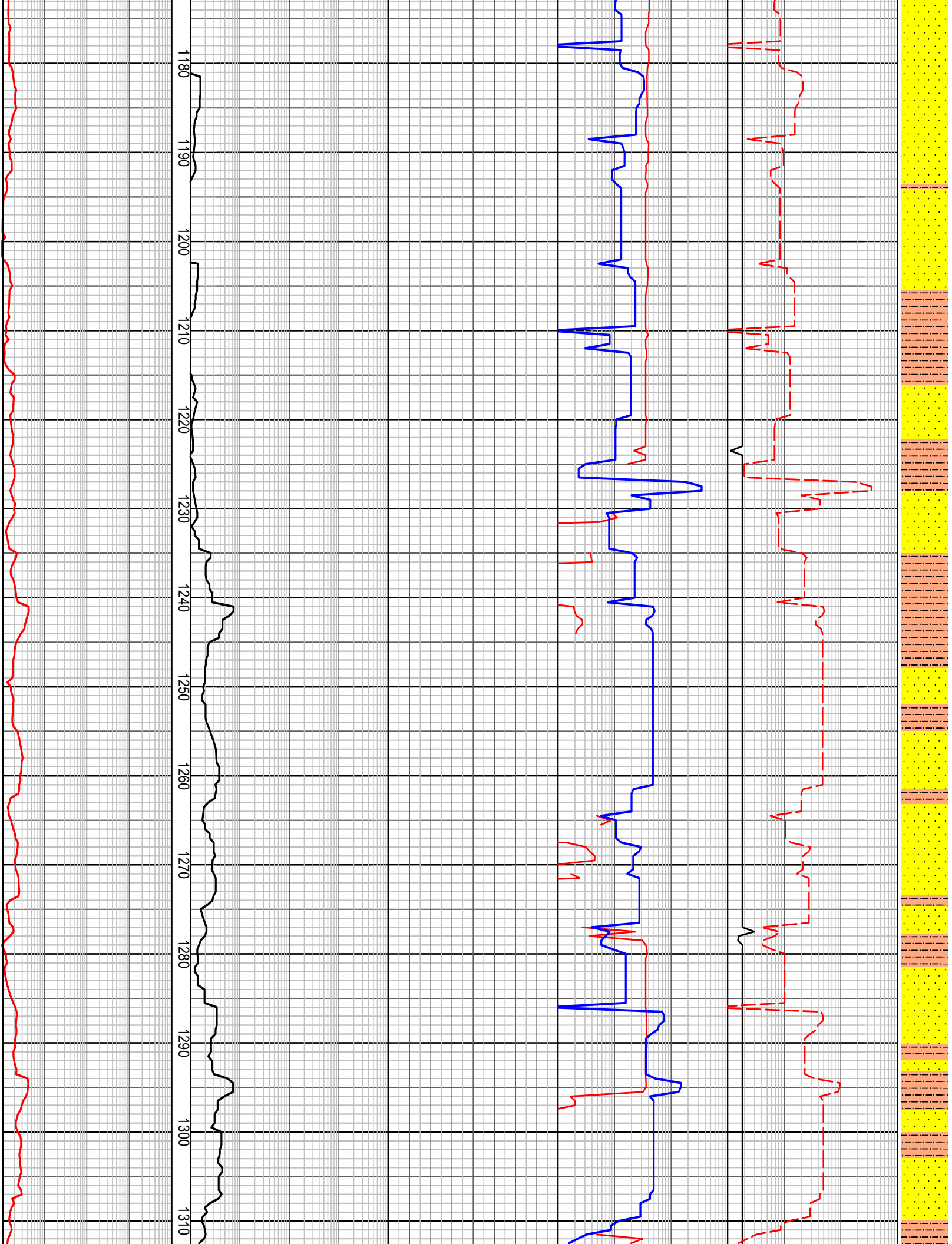


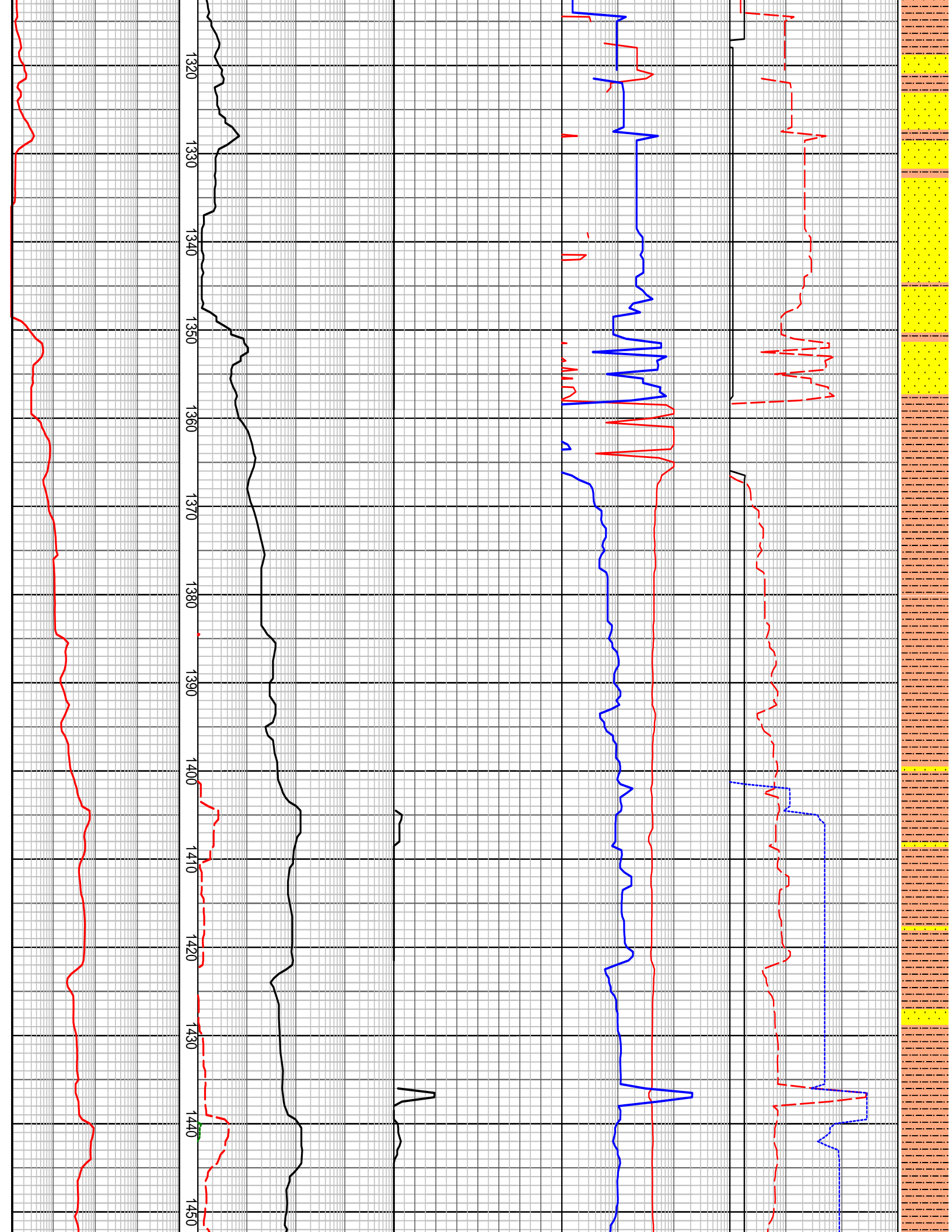


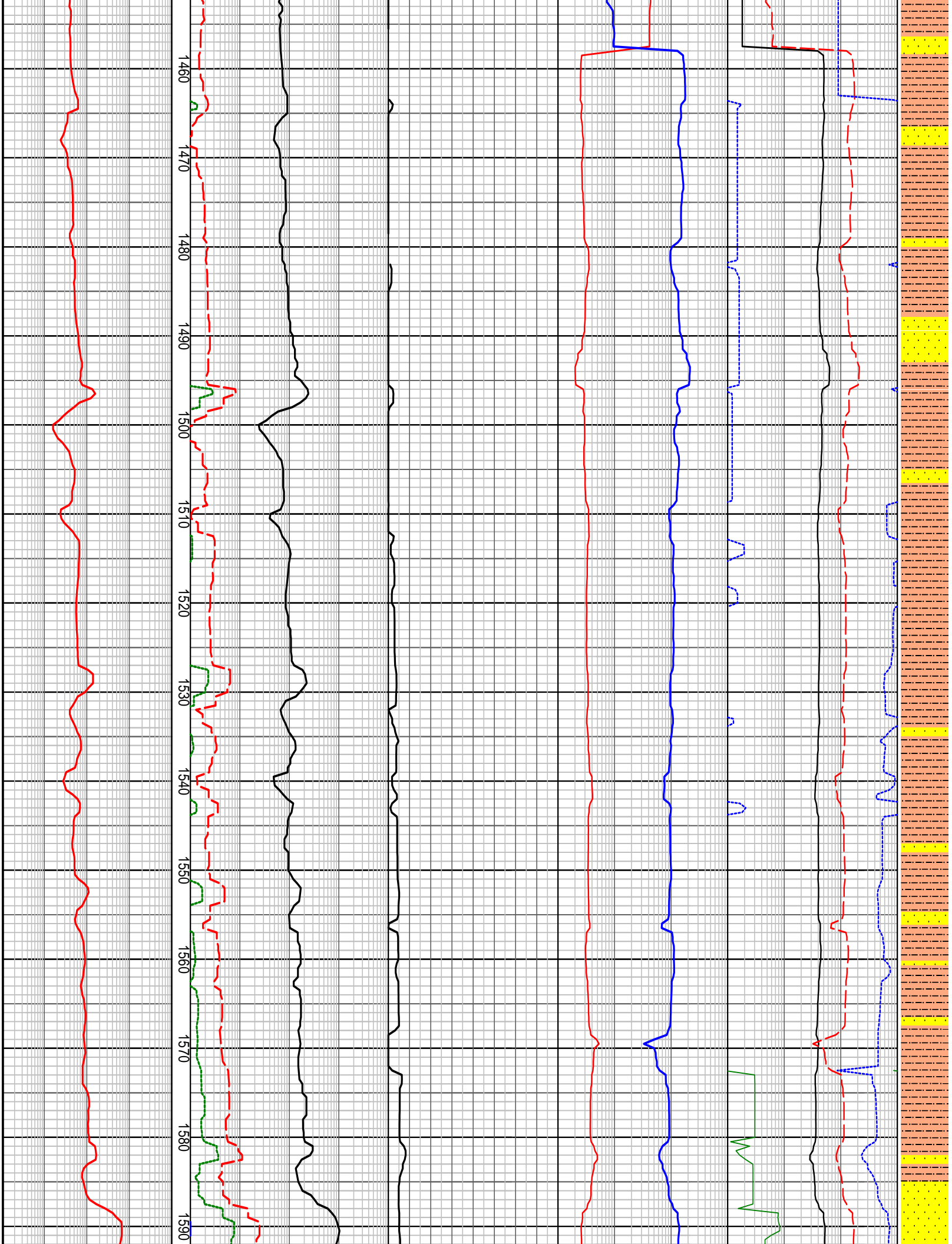
NB 10 REED RSX616M-A16
PDC Bit
311mm (12-1/4") 3x15 3x16
jets
In: 1050.00m Out: xxxx.xxm
Drilled xxx.xxm in xx.xhrs
X-X-XX-X-X-XX-XX

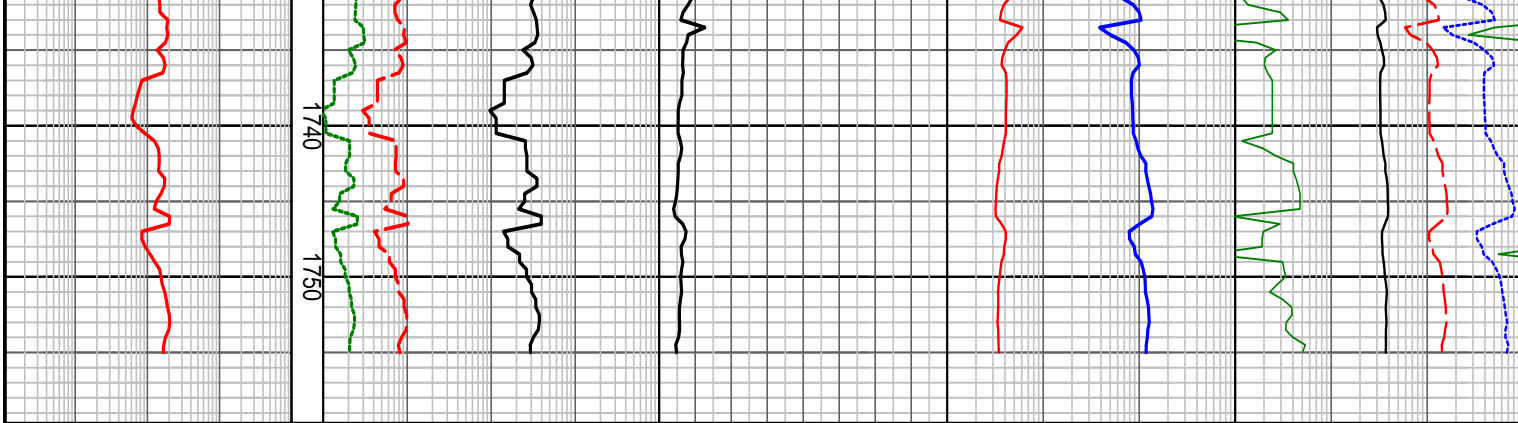
1040
1050
1060
1070
1080
1090
1100
1110
1120
1130
1140
1150
1160
1170











HENRY 2DW1 ST1 GAS RATIO PLOT

TOTAL GAS DITCH GAS	CHROMATOGRAPH ANALYSIS	OCQ OCQ Backup	RATIOS GWR	C1/(C2+C3+C4) C1/C2
1 10 100 1000 unit	MD meters 1:500	5 6 7 8	10 100 1000	C1/C3
	Methane	OCQ	LHR	C1/C4
	Ethane	1 2 3 4	10 100 1000	C1/C5
	Propane			10 100 1000
	iso-Butane			
	iso-Pentane			
	n-Butane			
	n-Pentane	10 100000		
ppm				